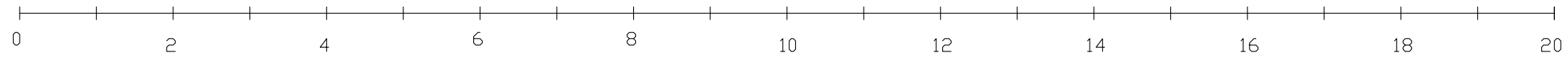
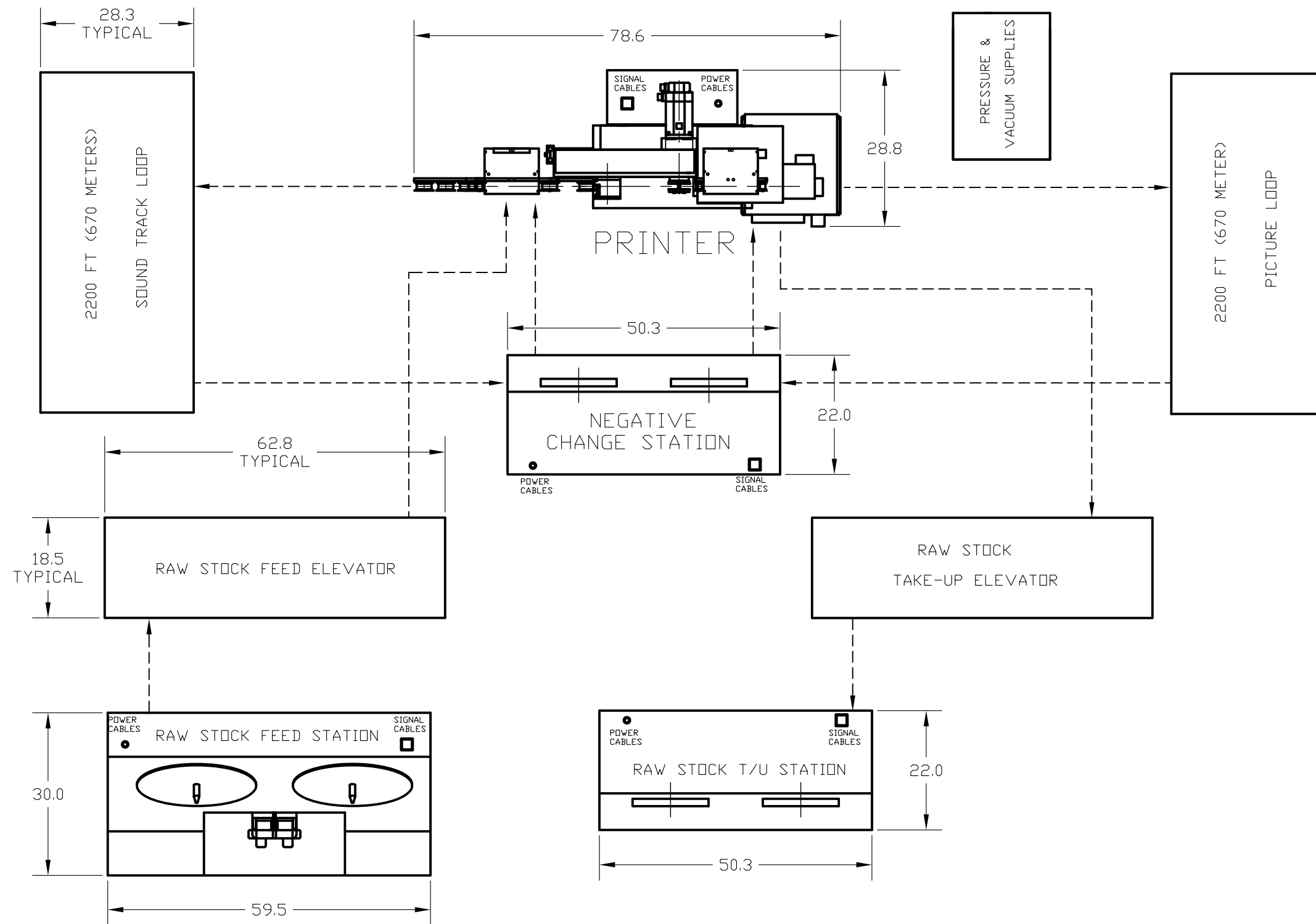


SCALE IN FEET



SCALE IN mm



4. FILM PATH - - - - ->

3. THE VACUUM AND PRESSURE BOXES MAY BE STACKED OR PLACED INTO ANOTHER ROOM.

2. THE REQUIRED CEILING HEIGHT FOR THE ELEVATORS IS 135 INCHES (3.43 METERS). THE MAXIMUM HEIGHT OF THE OTHER COMPONENTS IS 71 INCHES.

1. THE DRAWING ONLY SHOWS THE COMPONENT FOOTPRINT. ROOM SIZE, WORK FLOW AND ACCESS MUST BE CONSIDERED FOR AN ACTUAL INSTALLATION. THE FEED STATION SHOULD BE LOCATED NEAR THE RAW STOCK SUPPLY. THE TAKE-UP STATION SHOULD BE NEAR THE PROCESSORS. THE CHANGE STATION SHOULD BE LOCATED ACROSS FROM THE PRINTER.

NOTES:

QTY	PART OR POSITION NO.	NAME	DESCRIPTION - MATERIAL - FINISH
			UNLESS OTHERWISE SPECIFIED 1. DIMENSIONS ARE PER ANSI Y14.5-1973 2. SURFACE ROUGHNESS PER ANSI B46.1-1978 3. LINEAR DIMENSIONS IN INCHES 4. LINEAR TOLERANCES: X ± .05, .01X ± .02, .00X ± .005 5. ANGULAR TOLERANCES: X ± 5°, X ± 5° 6. MACHINED SURFACES: 1 AND 2 ALL PLANES .002/INCH DIAMETERS WITHIN .005 TIR MAXIMUM SURFACE ROUGHNESS √ 32 7. BREAK EDGES .25 TO .5 8. RESISTANCE VALUES IN OHMS 9. CAPACITANCE VALUES IN MICROFARADS
			SCALE: DRAWN: MGM 5-25-10 ENGR: MICHELSON APPR:
			THE INFORMATION DISCLOSED HEREIN IS THE EXCLUSIVE PROPERTY OF TECHNICAL FILM SYSTEMS OR MAY CONTAIN PROPRIETARY RIGHTS OF OTHERS AND IS NOT TO BE USED OR DISCLOSED TO OTHERS WITHOUT THE WRITTEN CONSENT OF THE ABOVE
			CONTINUOUS PRINTING SYSTEM SH 1 OF 1 COMPONENT FOOTPRINTS D173-0001