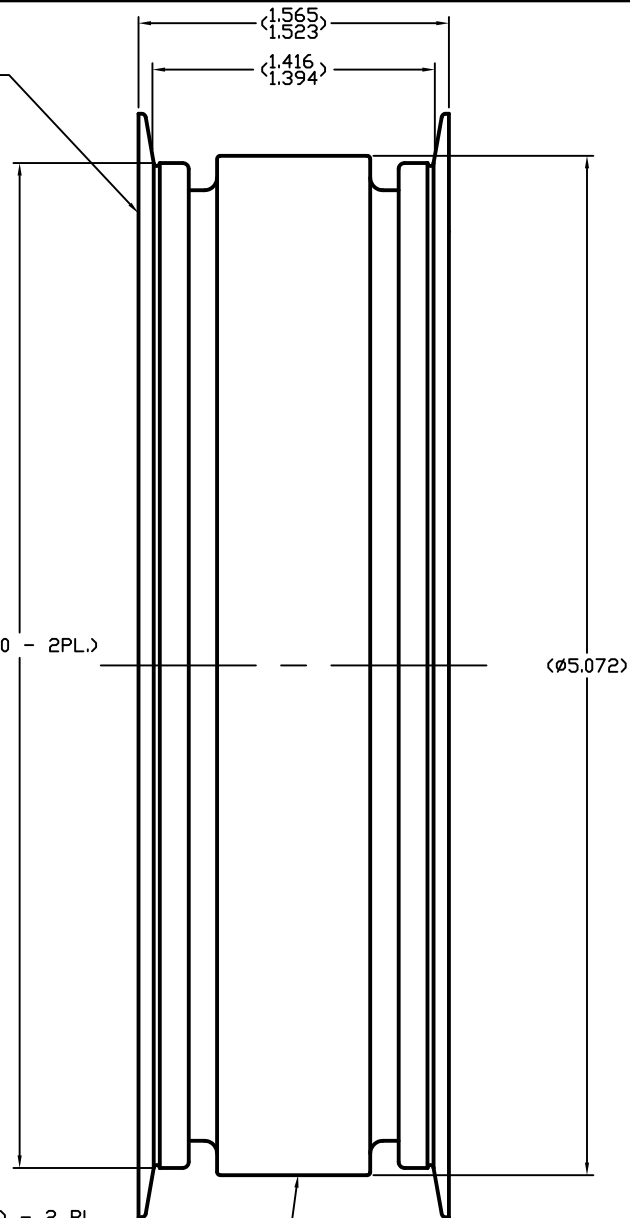


D50-1053 FLANGE - ROLLER, 5 INCH - 2 PL.

Ø5.490

Ø5.000 - 2PL.

PP1002 BEARING - RADIAL, 1/4" (CRES) - 2 PL.



1.565
1.523

1.416
1.394

Ø5.072

C50-1055 SPACER - ROLLER, 5" S/T

		X	
QTY	PART OR POSITION NO.	NAME	DESCRIPTION - MATERIAL - FINISH
<small>UNLESS OTHERWISE SPECIFIED 1. DIMENSIONS ARE PER ANSI Y14.5-1973 2. SURFACE ROUGHNESS PER ANSI B46.1-1978 3. LINEAR DIMENSIONS IN INCHES 4. LINEAR TOLERANCES: X ± .05, .XX ± .02, .XXX ± .005 5. ANGULAR TOLERANCES: X ± 5°, X ± .5° 6. MACHINED SURFACES: 1 AND 7 ALL PLANES .002/INCH DIAMETERS WITHIN .005 TIR MAXIMUM SURFACE ROUGHNESS $\sqrt{32}$ 7. BREAK EDGES .01 TO .02 8. FILLETS R0.02 MAX.</small>			
		SCALE:	2:1
		DRAWN:	RSK 22OCT10
		ENGR:	MICHELSON
		APPR:	
		REFERENCE DWG	
THE INFORMATION DISCLOSED HEREIN IS THE EXCLUSIVE PROPERTY OF TECHNICAL FILM SYSTEMS <small>OR MAY CONTAIN PROPRIETARY RIGHTS OF OTHERS AND IS NOT TO BE USED OR DISCLOSED TO OTHERS WITHOUT THE WRITTEN CONSENT OF THE ABOVE</small>			ASSY. - ROLLER, 5" S/T
			SH 1 OF 1
			C50-0113